

## Model : SMS Hub

### Message Center - SMS Hub

SMS Hub is intelligent SMS message center software that will manage your messages (SMS). It can log messages scheduled sending of messages as well as automatic and manual message archive system.

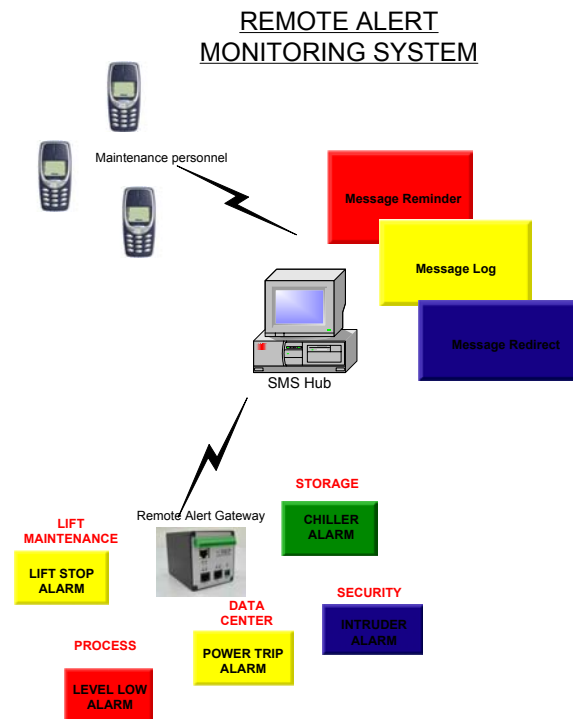
SMS hub comes with such a user-friendly interface that a user will be able to use it even without reading through its user manual. A user can customize the all the messages.

SMS hub has the capability of not only send short messages to individual but also send short messages to a group of people. The length of messages is not only limited to only 160 characters but any messages that exceed 160 characters will be automatically divided into several pieces of message.

#### Features

- **Modem pool:** enables to use more than one modem (up to 10 modems).
- **Contact management:** enables to include contact mobile phone information.
- **Group management:** enables creation of contact groups.
- **Message management:** customized messages creation.
- **Scheduled message system:** enables creation of scheduled message system. (daily, weekly and monthly)
- **Message logging:** enables logging of incoming and sent messages.
- **Message archiving:** enables manual and automatic message archiving.

- **Task management:** enables creation of task to send predefined message by timer or upon receiving another predefined messages



#### Application

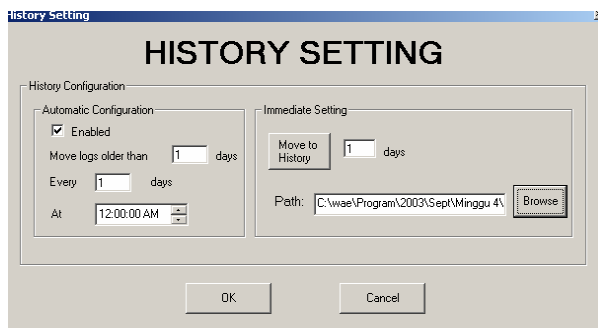
Message center can be used for :

- Process alert
- Security alert
- Storage temperature alert
- Lift maintenance alert
- Power failure/recovery alert
- Low inventory alert

## Increase Throughput by connecting to a GSM modem pool.

The software can be connected with just modem or more modems to increase the incoming and outgoing message throughput. The software will select available modem to receive or send messages. Up to 10 GSM modem can be connected to the software

## Message Archiving



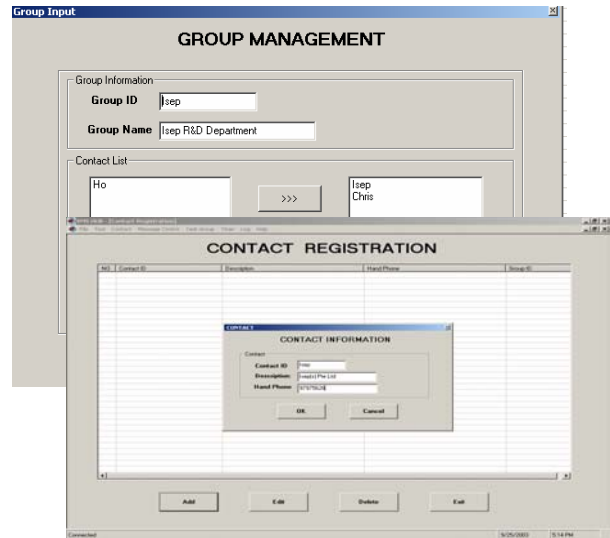
Automatic message archive to message database at predefined time. Predetermined number of days of messages will be archived. Messages will be archived into .csv file into a history files folder.

Immediate message archive as text file or csv for a determined number of days of log message

## Contact Registration & Group Registration

Manage your contacts using contact registration and group registration display. All remote units and hand phones for which messages are sending to or receiving from need to be registered in the contact registration. You can group contacts into

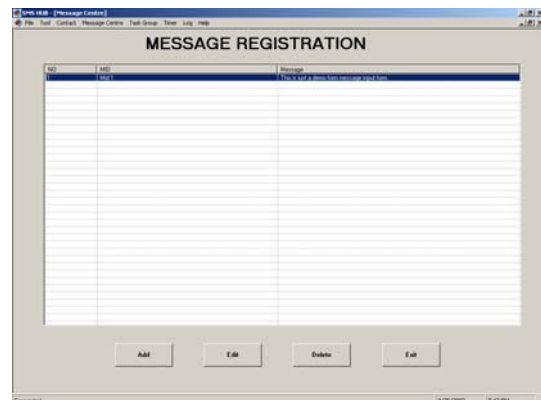
group using Group registration. Message will be send to group upon activation.



## Message Registration

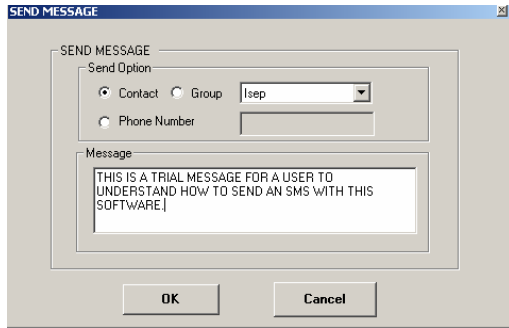
Predefined message can be enter into the system and send later when activated either by timer or upon receiving other predefined message.

More than 160 characters can be configured. If a user sends an SMS whose message is exceeds 160 characters then this software will automatically divides the messages to a several SMS.



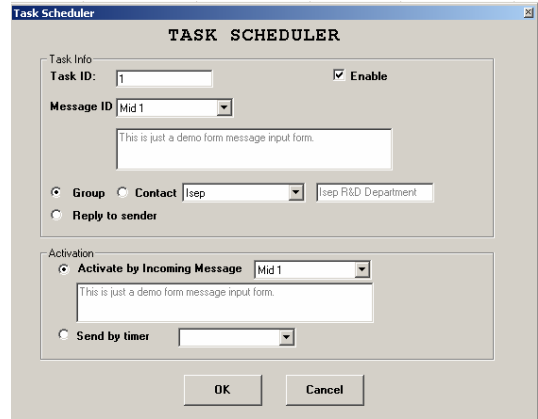
## Sending SMS manually

One of the features of this software is a message can be sent to a contact, group of contacts or a user-defined phone number manually on demand.



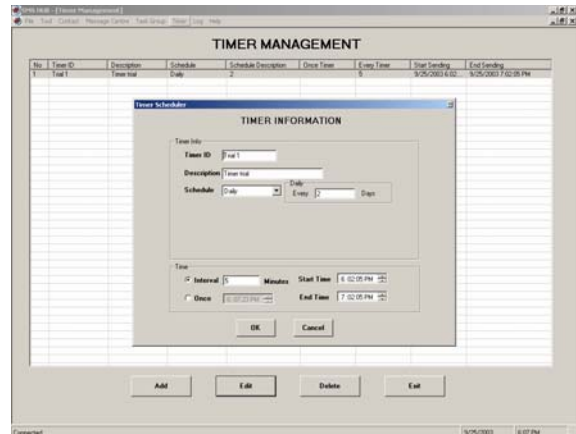
## Task Management

Perhaps the most wonderful about SMS HUB is the Task management. This allow configuring of task in which how message to be sent. For example to send message to remote units to get data at a predefined time. Or to send message when a predefined message is received. This allows alarm message from remote unit to be redirect to technician with instructions. There is no need to change instructions or handphone number at the remote units in the event changes is required. Change can be make at the SMS hub, thus making it more convenient for maintenance personnel.



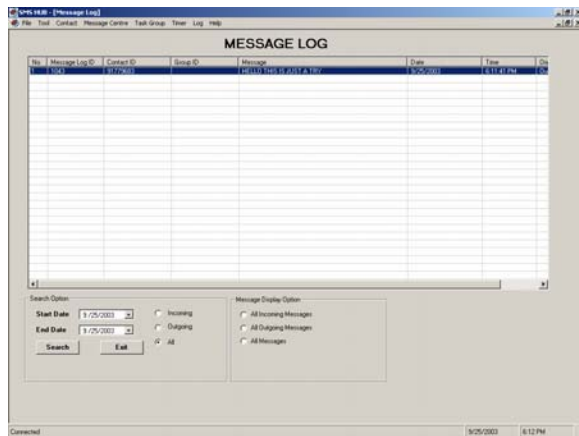
## Timer Management

Timer management is used to display all the configured timers in the system. This includes timer id, description, schedule, schedule description, once timer, every timer, start sending and end sending.



## Message Log

Message log is used to display all incoming and outgoing messages showing date and time of message received and sent. It also displays sender or recipient number. You can filter by incoming or outgoing and date of message



## System Requirements

### Minimum PC requirement

386, 486 or Pentium processor PC  
 A Mouse Device  
 Microsoft Window 2000, Window XP  
 CD-ROM drive  
 Additional 10 MB of hard disk space  
 Serial connection

## Ordering Information

SMS Hub : license for 20 contacts  
 SMS Hub –100 : license for 100 contacts  
 SMS Hub – unlimited : license for unlimited contacts

*Note: Specifications are subjected to change without notice. Kindly contact our sales personnel for the latest specifications.*

## ISEP (S) Pte Ltd

Add : No 19 Toa Payoh Lorong 8 #06-01 Singapore 319255

Tel: 6356-4237 Fax: 6356-7322 Email: sales@ise-p.com

Website : [www.ise-p.com](http://www.ise-p.com)