

Remote Alert Page PGR-Alert-01

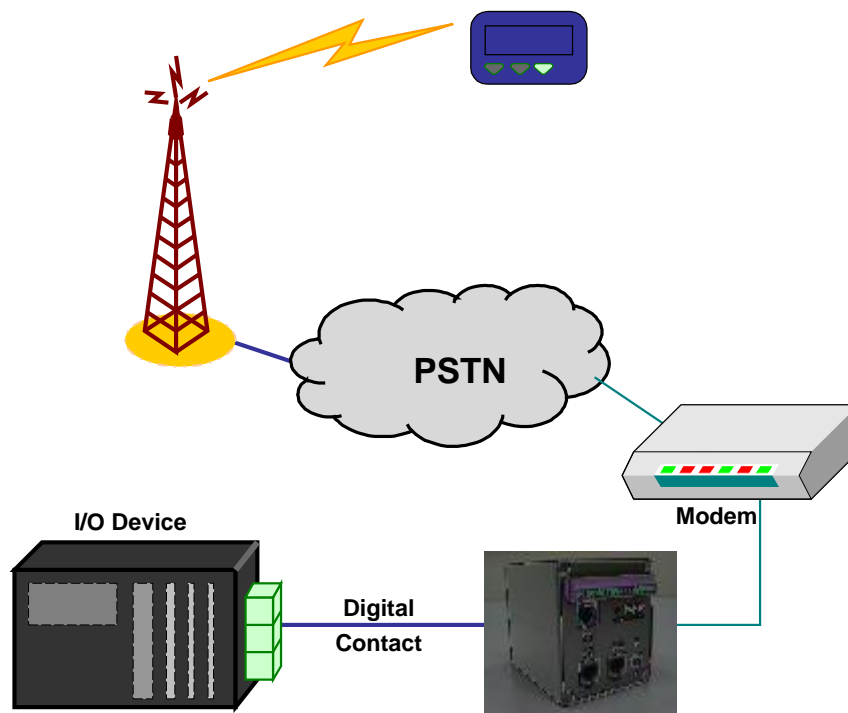


Table of Content

Table of Content	2
1. Introduction	3
2. Specification	4
3. Installation	5
4. Function Description	7
5. Configuration	8
Pager Number Setting	9
Alarm Logic Setting	10
Communication Port Setting	11
Alarm Message	12

1. Introduction

The Remote Alert Page (PGR-Alert-01) is a cost effective System Alert Device. It allows user to alert operators or technicians by paging alarm messages that based on discrete contact input. The contact input could be wired from any device that generate relay contact upon alarm or fault. In this manner, operators or technicians can be alerted immediately.



2. Specification

Physical Dimension

Dimension	110mm x 55mm x 75mm
Weight	800g
Diagnostic LEDs	Serial : Tx, Rx, Power
Installation Method	35mm Din-Rail, desk mount.

Environmental

Operating Temperature	10°C – 50°C
Operating Humidity	5 – 90 % non-condensing

Power

Supply Voltage	unregulated 10 to 30 VDC, polarity independent
Current	150mA
Power Consumption	5 watts
Connection	Screw terminal

Communication Interface

- Serial Port 1	RS232
Data rate	4800-113200 bit/s Half duplex or simplex
Data format	8 Data bits, No parity, 1 stop bit
Connection	RJ45 connector
- Serial Port 2	RS232 (Configuration Port)
Data rate	4800-113200 bit/s Half duplex or simplex
Data format	8 Data bits, No parity, 1 stop bit
Connection	RJ45 connector
- Network Port	10BaseT, IEEE std 802.3, RJ45 connector
Data rate	10 Mbit/sec, half duplex

3. Installation

1. Connect power to the Power Port terminal.
2. Connect modem to Serial Port 1 terminal.
3. Serial port 1 shall be used to connect to telephone modem.
4. Serial port 2 shall be used for configuration only.

Serial Port 1 , RJ 45 connection

Pin	Signal	Direction	Description
1	RX	In	Received data
2			Not connected
3			Not connected
4	Gnd		Gnd
5			Not connected
6			Not connected
7			Not connected
8	TX	Out	Transmitted data

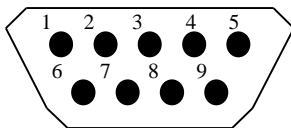
Serial Port 2 , RJ 45 connection

Pin	Signal	Direction	Description
1	RX	In	Received data
2			Not connected
3	CTS		Clear to send
4	GND		Gnd
5	DSR		Data Set Ready
6	DTR		Data Terminal Ready
7	RTS		Request to Send
8	TX	Out	Transmitted data

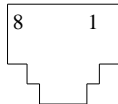
Ethernet 10 Base T , RJ 45 connection

Pin	Signal	Direction	Description
1	TD+	Out	Transmitted data
2	TD-	Out	Transmitted data
3	RD+	In	Received Data
4			Not connected
5			Not connected
6	RD-	In	Received Data
7			Not connected
8			Not connected

DB9 Male Connector



RJ45 Connector



LEDs

TX1	Color Green	ON: Mark (>3 V)	OFF : Space (<-3V)
RX1	Color Red	ON: Mark (>3 V)	OFF : Space (<-3V)
TX2	Color Green	ON: Mark (>3 V)	OFF : Space (<-3V)
RX2	Color Red	ON: Mark (>3 V)	OFF : Space (<-3V)
PWR	Supervise Green	ON: Power OK	OFF: No Power

4. Function Description

The Remote Alert Page is used for alerting on critical alarm. Input is based on discrete input (potential free contact). The unit supports 4 discrete inputs.

The Remote Alert Page is compatible to alpha-numeric pager. User can assign the alarm (discrete input) to pager. Up to 10 pagers can be assigned. The message to be send can be configured.

The Remote Alert Page can be either in configuration mode or run mode. Refer to section 5 on how to configure the Remote Alert Page.

Run Mode

All signal wiring and power wiring to be carried out first before putting the Remote Alert Page on run mode. The Remote Alert Page will monitor any alarm wiring to its input terminal and page the respective pager when activated.

5. Configuration

This section describes the installation and configuration of the Remote Alert Page.

System requirements:

To install and run the configuration program from PC, the following requirements are needed.

Minimum PC requirement:

386, 486 or Pentium processor PC

Microsoft window 95/98, Window NT, Window 2000, Window XP

16MB of RAM for Window 95/98

24MB of RAM for Window NT

32MB of RAM for Window 2000

CD-ROM drive

8MB of hard disk space

Serial connection

Installation

Insert the configuration tool CD-ROM into the CD-ROM drive.

Run the “Setup.exe” executable file.

Run Configuration

To start the configuration tool, click the configuration tool icon

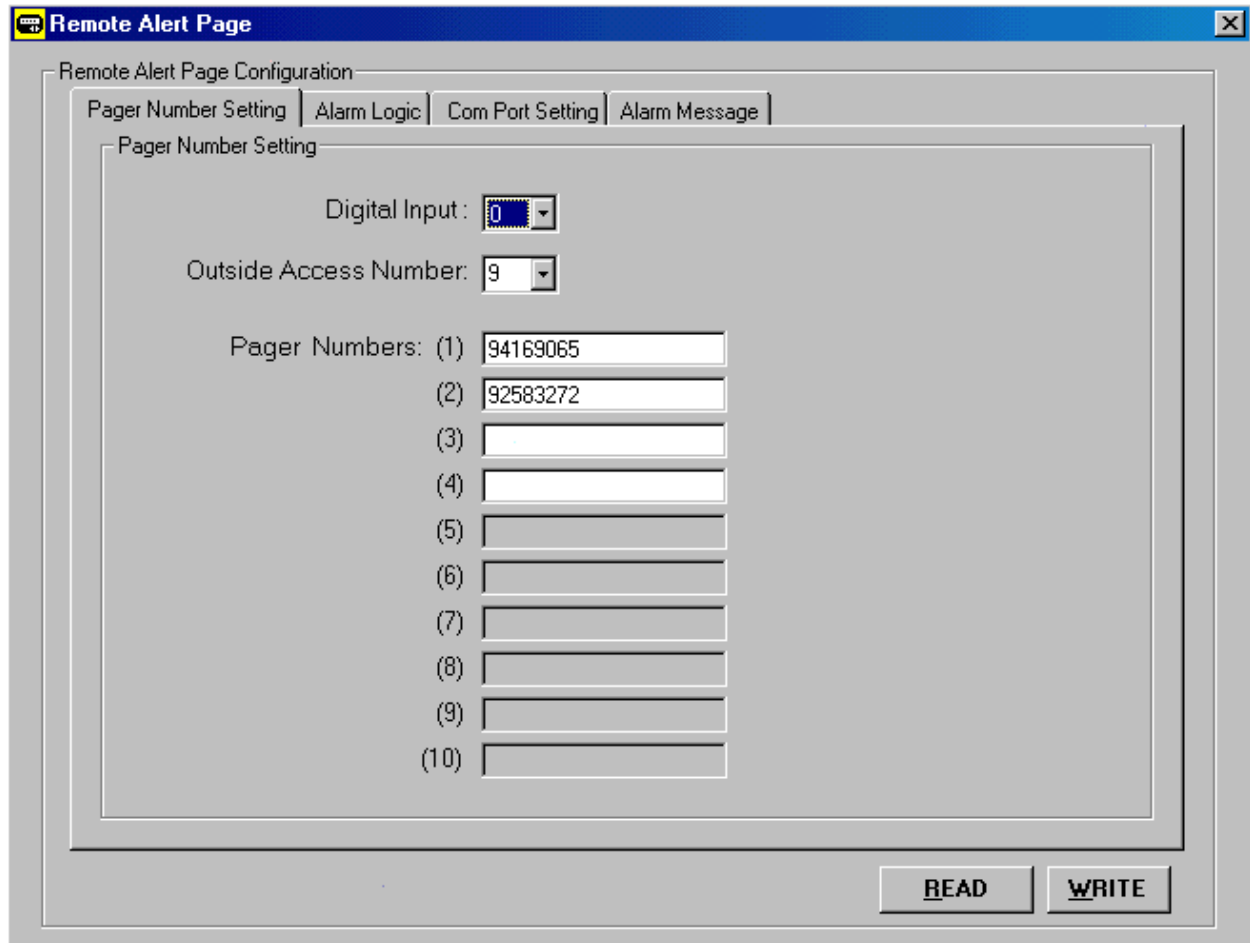
After the configuration tool has been successfully open, the program will detect if module is connected to the PC via the serial port. It will Display an Error message on the screen if no module is connected.

Once the module is detected, user can proceed to set or change configuration for:

- Pager Number Setting
- Alarm Logic
- Comm Port Setting
- Alarm Message

After configuration, disconnect the serial cable from the configuration port and reset the Remote Alert Page.

Pager Number Setting



The screenshot shows a software window titled "Remote Alert Page" with a sub-tab "Remote Alert Page Configuration". The "Pager Number Setting" tab is active. It contains the following fields:

- Digital Input: A dropdown menu with "0" selected.
- Outside Access Number: A dropdown menu with "9" selected.
- Pager Numbers: A list of 10 input fields. The first two contain "94169065" and "92583272". The remaining eight are empty.

At the bottom right of the window are two buttons: "READ" and "WRITE".

Digital Input:

There are totally 4 digital inputs. These 4 points are corresponded to the 4 discrete contact input.

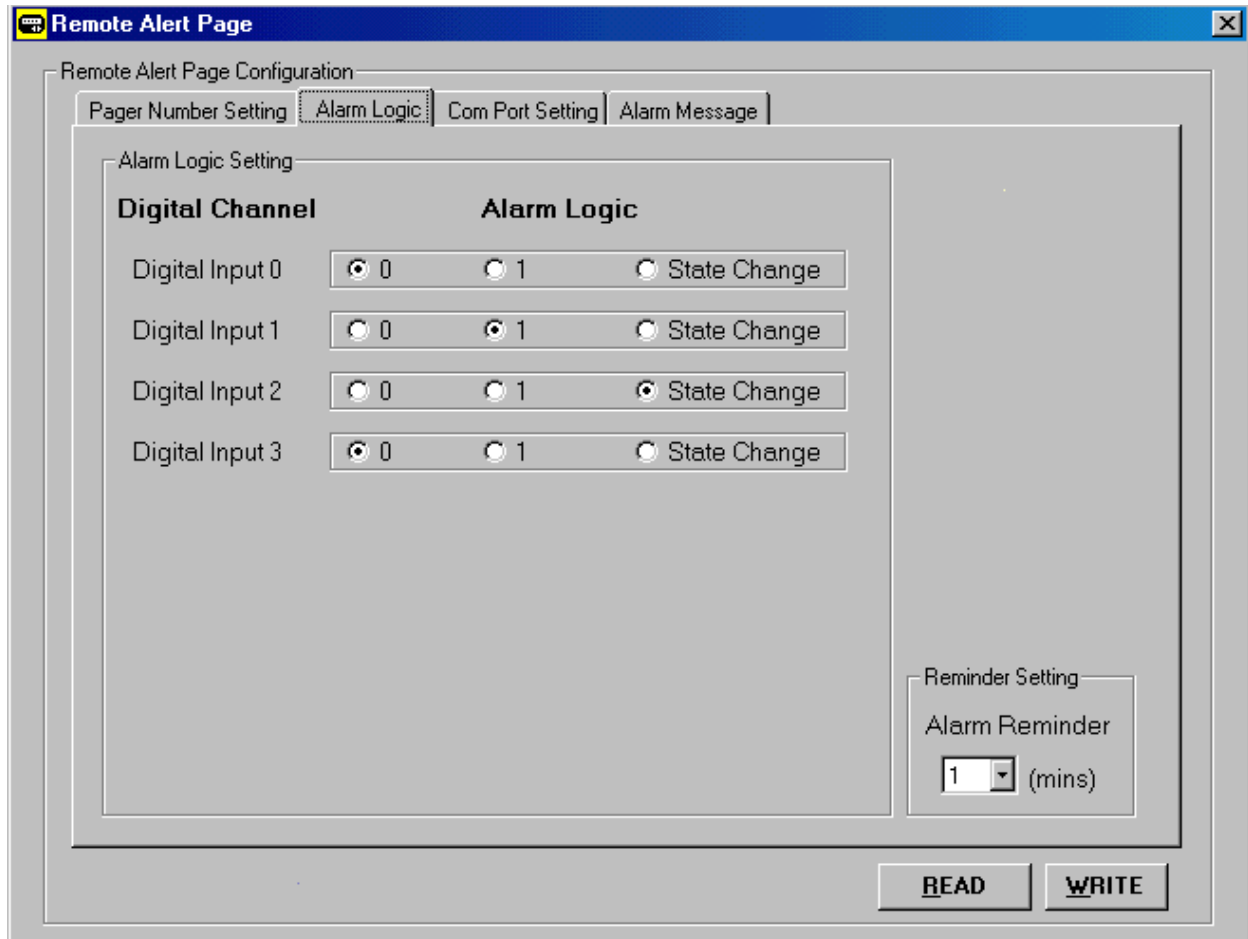
Outside Access Number:

There are only 2 variables can be selected, "N" or "9". "N", NONE means the telephone modem is connected to the direct telephone line.

Pager Numbers:

Up to 10 pagers can be assigned.

Alarm Logic Setting



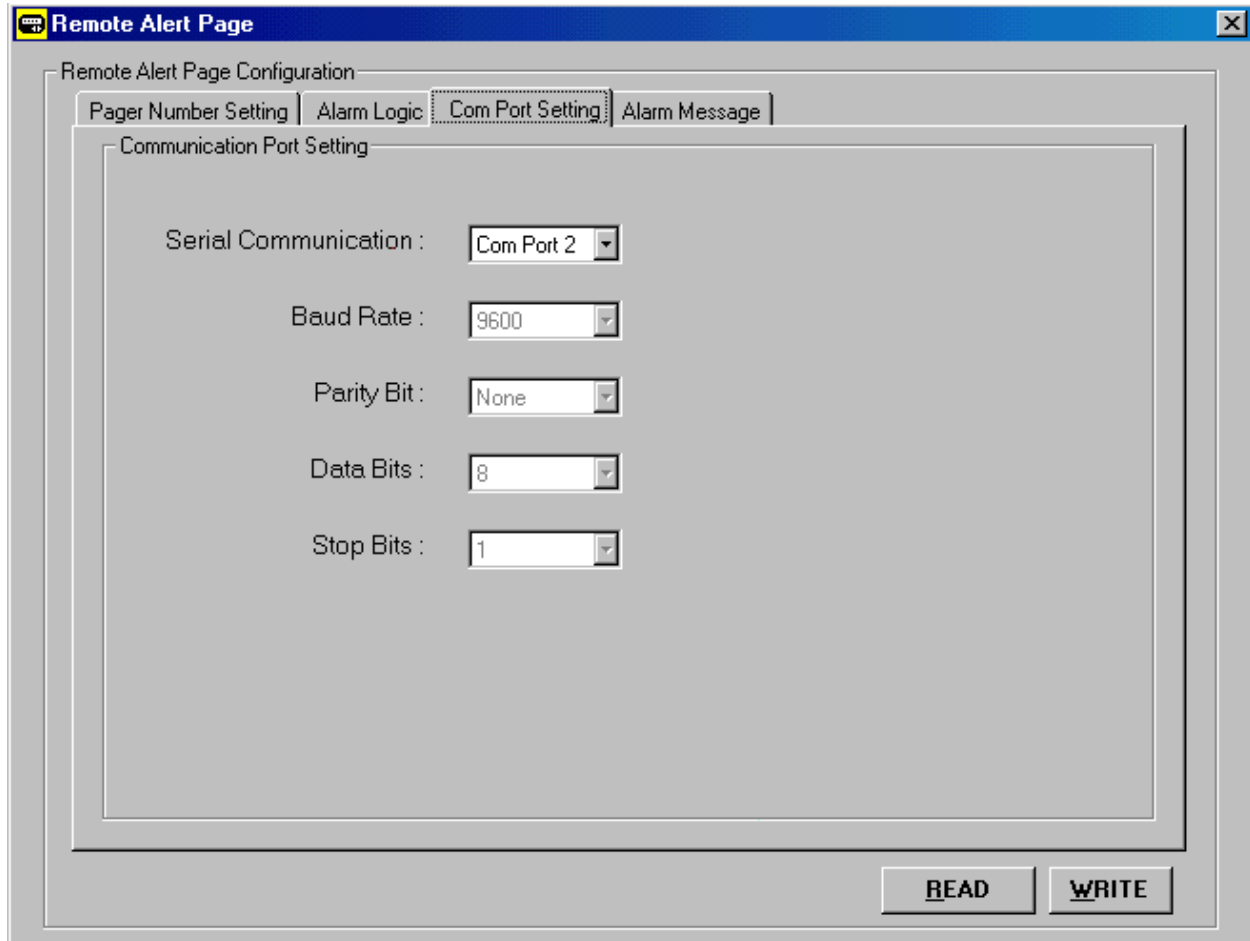
Alarm Logic:

There are totally 3 types of Alarm Logic, 0 (LOW), 1 (HIGH), and State Change. User can set the 4 digital points to be alarmed based on these 3 Alarm Logics.

Reminder Setting:

Remind Page in Minutes.

Communication Port Setting



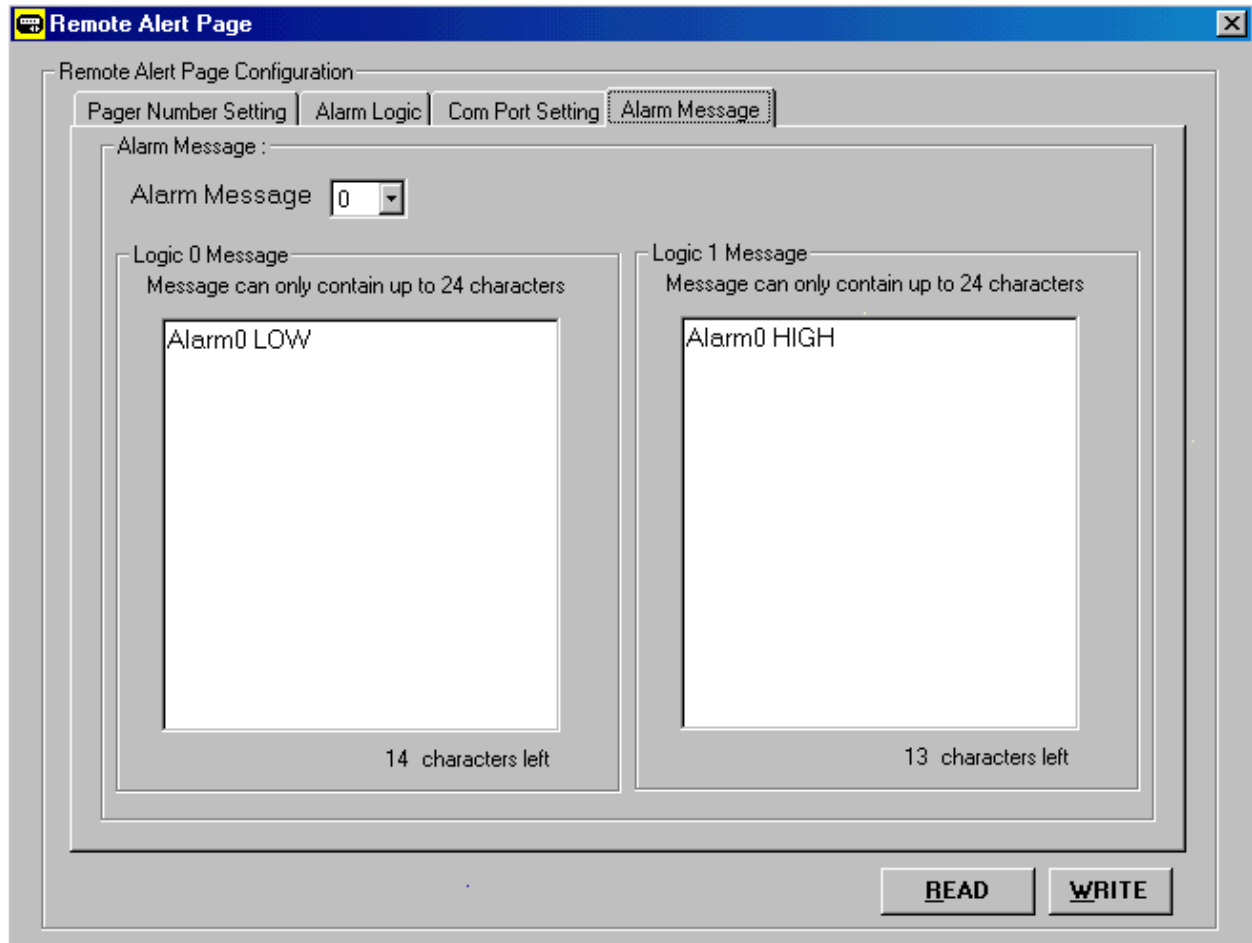
The screenshot shows a software window titled "Remote Alert Page" with a sub-tab "Remote Alert Page Configuration". The "Com Port Setting" tab is active, showing the following settings:

Parameter	Value
Serial Communication	Com Port 2
Baud Rate	9600
Parity Bit	None
Data Bits	8
Stop Bits	1

At the bottom right of the window, there are two buttons: "READ" and "WRITE".

This is used to set the Comm Port of the PC. Only Serial Comm Port is able to change, Baud Rate, Parity Bit, Date Bit, and Stop Bit are fixed.

Alarm Message



This section allow user to configure alarm message to be send to the pager.